



BROTHERLY ASSOCIATION CEMETERY DIGITAL MAPPING PROJECT

Charleston Cemetery Historic District

IAAM Alternative Spring Break - March 2024

Preservation Society of Charleston

Acknowledgments

This project was completed by the Preservation Society of Charleston (PSC) in partnership with the International African American Museum (IAAM) and the Anson Street African Burial Ground Project (ASABG) as part of the IAAM Alternative Spring Break Program in March 2024.

The final deliverables of the project were 1) a digital map in ArcGIS Survey123, 2) a paper map of the cemetery with each burial labeled with a number, 3) a corresponding spreadsheet of data, and 4) the following report with project analytics and photographs from the site.

PRESERVATION SOCIETY OF CHARLESTON

*Anna-Catherine Carroll, Manager of Preservation Initiatives
Laurel M. Fay, Preservation Coordinator
Madison Lee, Community Outreach Coordinator*

ANSON STREET AFRICAN BURIAL GROUND PROJECT

*Joanna Gilmore
La'Sheia Oubre*

INTERNATIONAL AFRICAN AMERICAN MUSEUM

*Felice F. Knight, Ph.D., Director of Education
Georgette Rivera, Education Coordinator
Brian Sheffey, Director of the Center for Family History
Grant Mishoe, Research Assistant*

IAAM ALTERNATIVE SPRING BREAK PROGRAM PARTICIPANTS

BENEDICT COLLEGE

Taylesse Deans

COLLEGE OF CHARLESTON

*Jordan Crimmins
Amari Hardy
Carson Pravar
Nola Watson*

COLLEGE OF THE HOLY CROSS

*Ned Coursey
Patrick Grudburg
Delaney Walch*

BROTHERLY ASSOCIATION CEMETERY DESCENDANTS & STEWARDS

*Rachel Dowling
Angela Hare
Debora Hazel*

BROTHERLY ASSOCIATION CEMETERY

DIGITAL MAPPING PROJECT



Photo by Laurel M. Fay, February 2024.

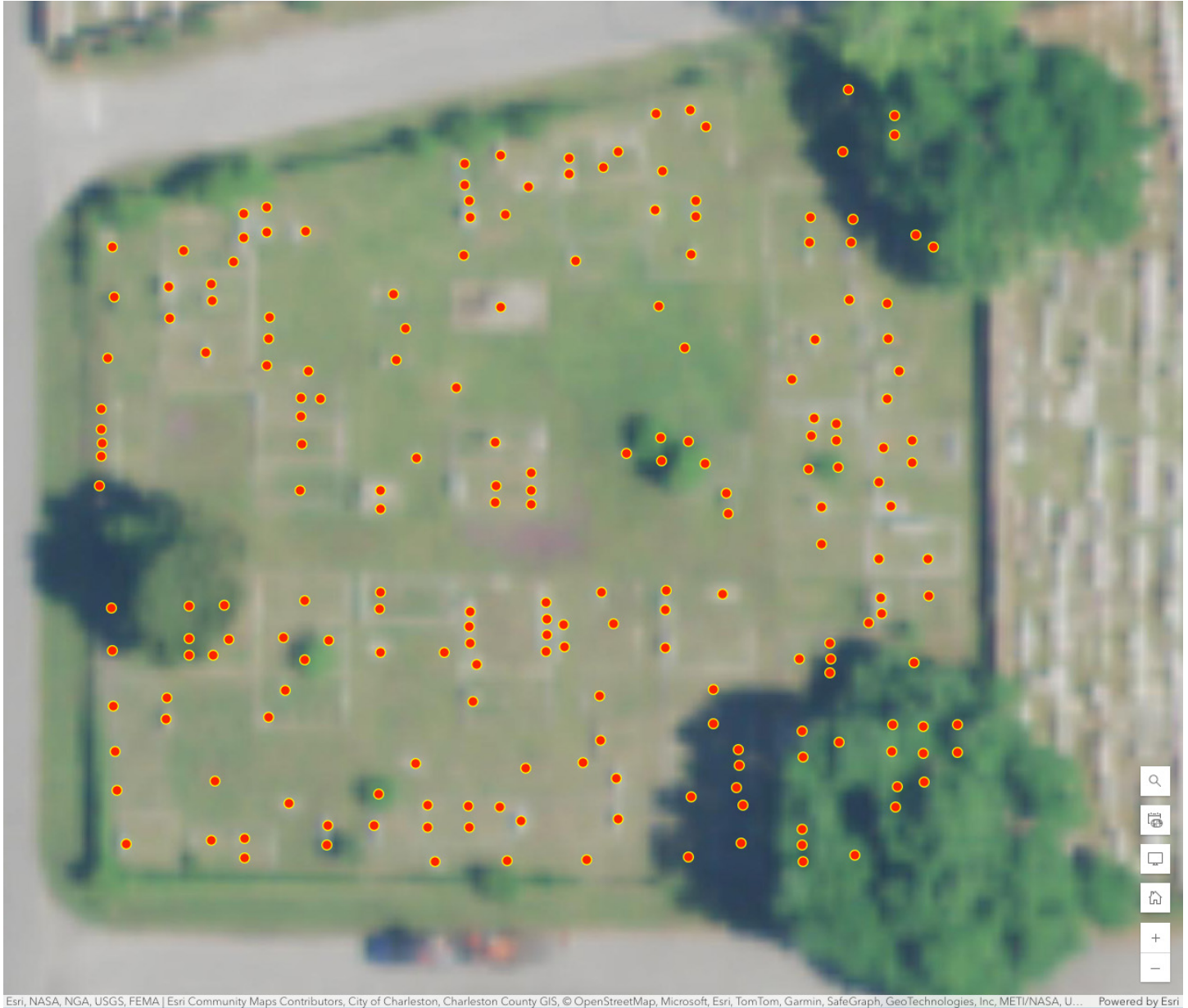
*This project captured information for **205 total extant burial markers**, representing **272 total persons interred** in Brotherly Association Cemetery.*

- *18 Military Veterans*
- *140 Family Coving Plots Identified*

BROTHERLY ASSOCIATION CEMETERY

DIGITAL MAPPING PROJECT

AERIAL VIEW OF CEMETERY WITH BURIAL POINTS



Data compiled using ArcGIS Survey123.

BROTHERLY ASSOCIATION CEMETERY

DIGITAL MAPPING PROJECT

SITE MAP

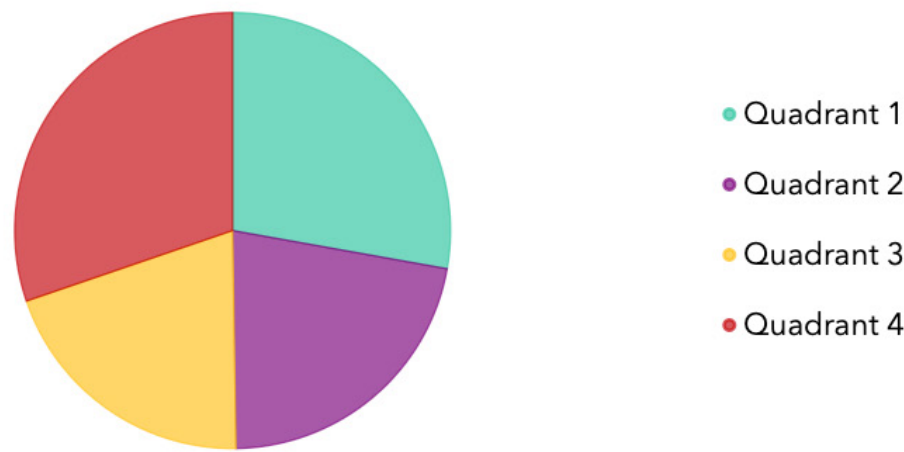


Graphic by Laurel M. Fay.

BROTHERLY ASSOCIATION CEMETERY

DIGITAL MAPPING PROJECT

CEMETERY QUADRANT LOCATION OF BURIALS



[Hide table](#)

☒ Empty categories [↑↓ Sort](#)

Answers	Count	Percentage
Quadrant 1	57	27.8%
Quadrant 2	45	21.95%
Quadrant 3	41	20%
Quadrant 4	62	30.24%

Answered: 205 Skipped: 0

Data compiled using ArcGIS Survey123.

BROTHERLY ASSOCIATION CEMETERY

DIGITAL MAPPING PROJECT

PHOTOGRAPHS OF MARKERS



BROTHERLY ASSOCIATION CEMETERY

DIGITAL MAPPING PROJECT

PHOTOGRAPHS OF MARKERS (continued)



BROTHERLY ASSOCIATION CEMETERY

DIGITAL MAPPING PROJECT

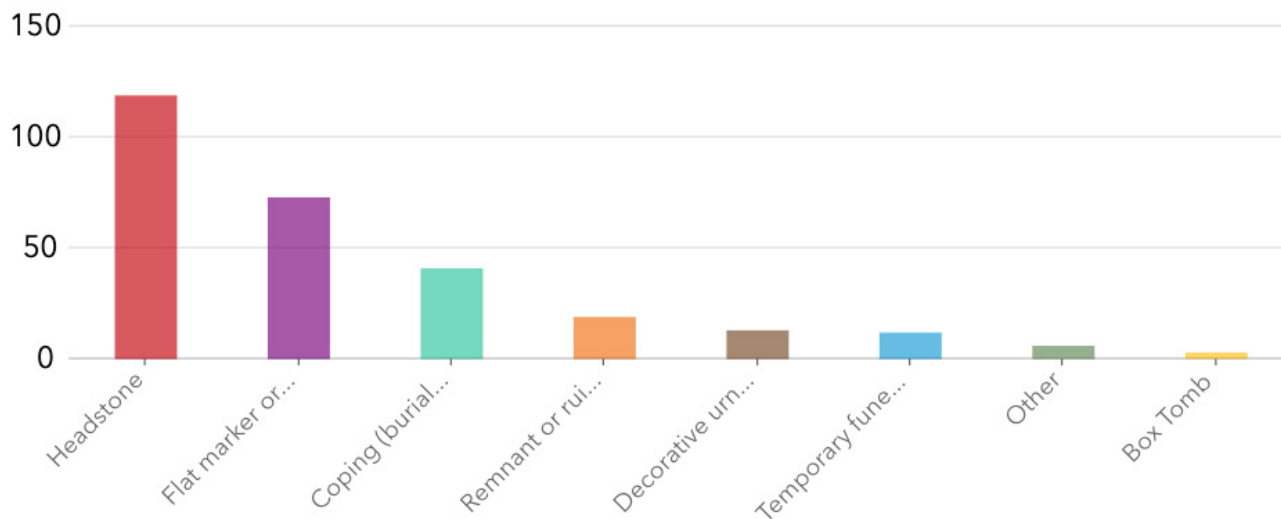
PHOTOGRAPHS OF MARKERS (continued)



BROTHERLY ASSOCIATION CEMETERY

DIGITAL MAPPING PROJECT

WHAT IS PRESENT ON THE LOT?



[Hide table](#)

Other response ☒ Empty categories Sort

Answers	Count	Percentage
Headstone	119	58.05%
Flat marker or tablet	73	35.61%
Coping (burial is in the earth, surrounded by a short wall called a "coping")	41	20%
Remnant or ruin	19	9.27%
Decorative urn or sculpture	13	6.34%
Temporary funeral home marker	12	5.85%
Other	6	2.93%
Box Tomb	3	1.46%

Answered: 205 Skipped: 0

Data compiled using ArcGIS Survey123.

DIGITAL MAPPING PROJECT

A pie chart showing the distribution of responses for the question 'Do you have a good idea of what you want to do?'. The chart is divided into two segments: a large red segment representing 'Yes' and a smaller teal segment representing 'No'. The 'Yes' segment is approximately 75% of the chart, and the 'No' segment is approximately 25%.

Response	Percentage
Yes	75%
No	25%

☒ Empty categories ↑↓ Sort

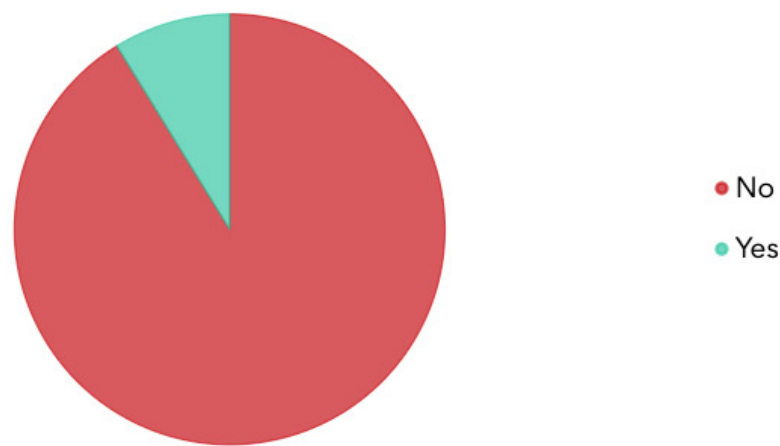
Answered: 205 Skipped: 0



BROTHERLY ASSOCIATION CEMETERY

DIGITAL MAPPING PROJECT

IS THERE A MILITARY MARKER PRESENT?



[Hide table](#)

☒ Empty categories [Sort](#)

Answers	Count	Percentage
No	187	91.22%
Yes	18	8.78%

Answered: 205 Skipped: 0

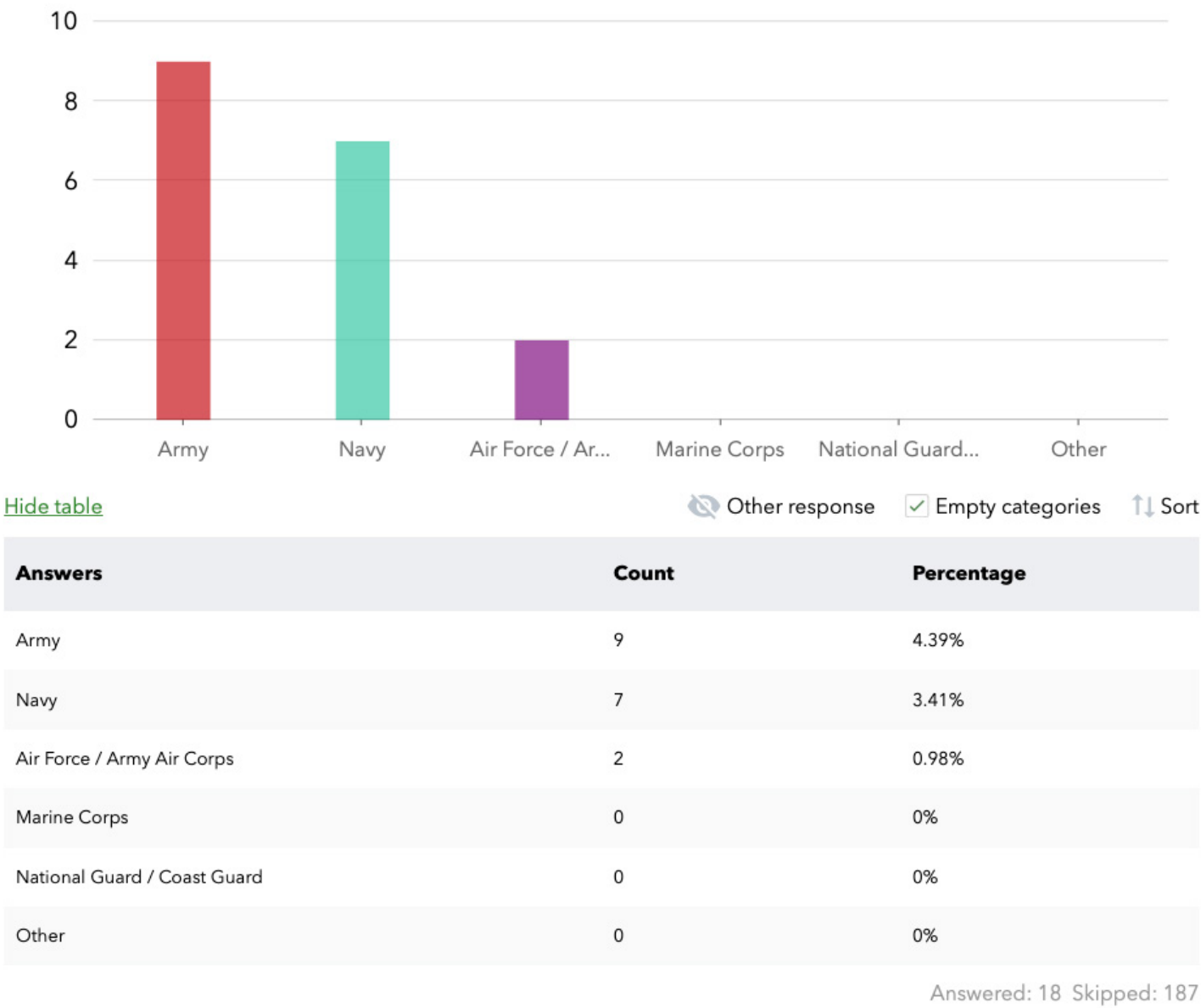


Location of military markers in cemetery. Data compiled using ArcGIS Survey123.

BROTHERLY ASSOCIATION CEMETERY

DIGITAL MAPPING PROJECT

IF YES, WHAT MILITARY BRANCH?



Data compiled using ArcGIS Survey123.

BROTHERLY ASSOCIATION CEMETERY

DIGITAL MAPPING PROJECT

IF YES, WHAT WAR OR BATTLE IS INDICATED, IF ANY?



Data compiled using ArcGIS Survey123.

BROTHERLY ASSOCIATION CEMETERY

DIGITAL MAPPING PROJECT

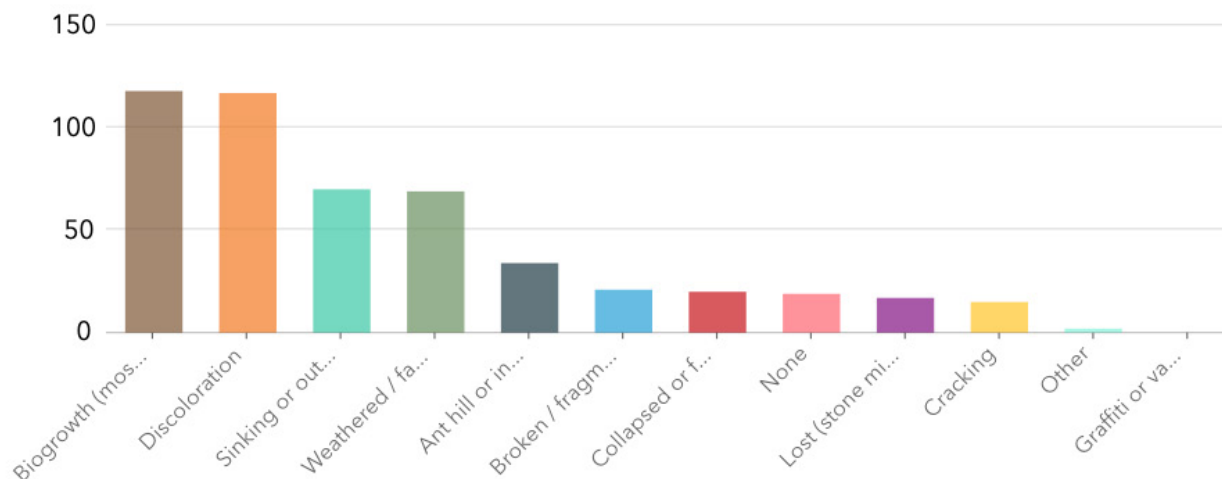
LIST OF VETERANS IN CEMETERY

NAME	MARKER ID #	MILITARY BRANCH	WAR OR BATTLE (IF APPLICABLE)
Thomas N. Bacot	58	Navy	World War II
Theodore C. Broadnax	39a	Navy	World War I and World War II
Alonza Corbin	28c	Army	World War II
Elias J. Corbin	28b	Army	World War I
Clement H. Edwards	10	Army	World War II
Edward James Edwards, Jr.	37c	Navy	World War II
James S. Edwards, Sr.	102b	Navy	World War I
James S. Edwards, Jr.	102d	Army	World War II
Julian S. Edwards	102e	Navy	World War II
John Fleming, Sr.	2c	Air Force/Army Air Corps	World War II
John Fleming, Jr.	2a	Army	Korean War
Robert L. Hoursey	17b	Army	World War II
Harry S. Lum	95b	Air Force/Army Air Corps	World War II
George W. Pitt	29	Navy	N/A
James W. Taylor, Jr.	69c	Army	World War II
Melvin Whaley	82a	Army	World War I
Coley Wheeler	72	Navy	World War I
Robert Wright	59	Army	World War I

BROTHERLY ASSOCIATION CEMETERY

DIGITAL MAPPING PROJECT

WHAT CONDITIONS DOES THIS MARKER HAVE?



[Hide table](#)

Other response ☒ Empty categories Sort

Answers	Count	Percentage
Biogrowth (moss, lichens, etc.)	118	57.56%
Discoloration	117	57.07%
Sinking or out of plumb (crooked)	70	34.15%
Weathered / faded	69	33.66%
Ant hill or insect activity	34	16.59%
Broken / fragmented	21	10.24%
Collapsed or fallen	20	9.76%
None	19	9.27%
Lost (stone missing from base)	17	8.29%
Cracking	15	7.32%
Other	2	0.98%
Graffiti or vandalism	0	0%

Data compiled using ArcGIS Survey123.

BROTHERLY ASSOCIATION CEMETERY

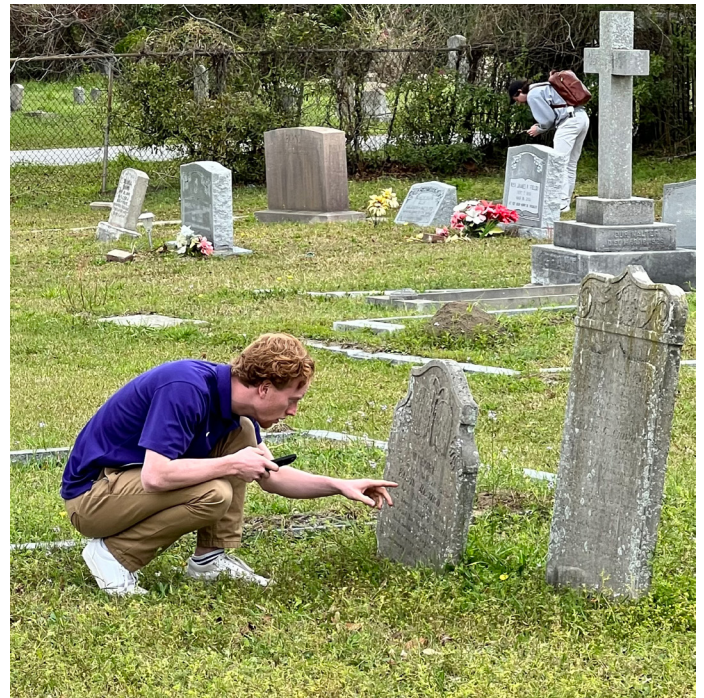
DIGITAL MAPPING PROJECT



Debora Hazel, Rachel Dowling, and Felice K. Knight, Ph.D.



Jordan Crimmins and Carson Pravar.



Patrick Grudburg.

BROTHERLY ASSOCIATION CEMETERY

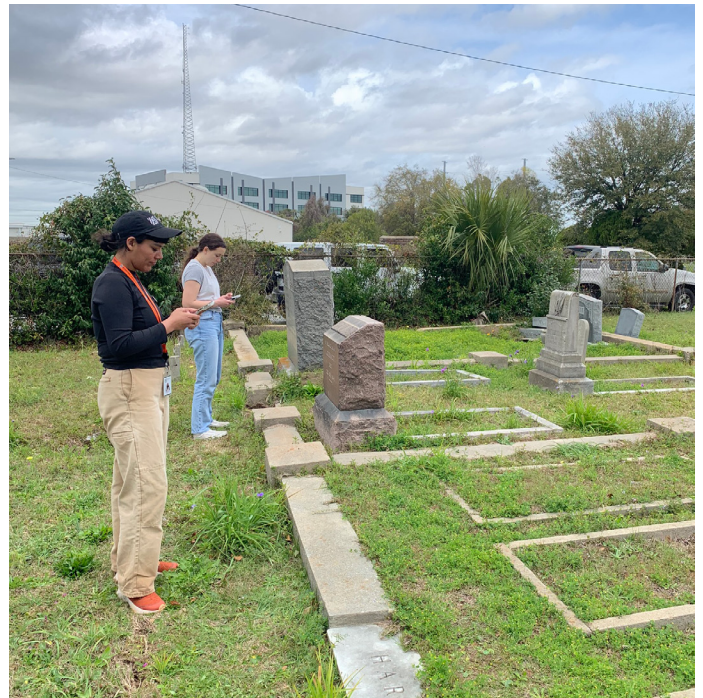
DIGITAL MAPPING PROJECT



Rachel Dowling, Debora Hazel, Angela Hare, and La'Sheia Oubre.



Nola Watson and Amari Hardy.



Georgette Rivera and Delaney Walch.

BROTHERLY ASSOCIATION CEMETERY

DIGITAL MAPPING PROJECT



Participants gathered at Brotherly Association Cemetery on March 6, 2024.



Georgette Rivera.



Madison Lee.

BROTHERLY ASSOCIATION CEMETERY

DIGITAL MAPPING PROJECT



Front row (kneeling): Patrick Grudburg, Delaney Walch, Georgette Rivera, Ned Coursey, Jordan Crimmins, and Madison Lee.

Back row (standing): La'Sheia Oubre, Joanna Gilmore, Debora Hazel, Angela Hare, Felice K. Knight, Ph.D., Amari Hardy, Nola Watson, Carson Pravar, Anna-Catherine Carroll, and Rachel Dowling.

Not pictured: Laurel M. Fay and Caroline Byrne.