



*Photo by Mike Bell via FindAGrave.com.*

# HUMANE & FRIENDLY SOCIETY CEMETERY DIGITAL MAPPING PROJECT

---

Charleston Cemetery Historic District  
*April-June 2025*

PRESERVATION  
ESTD SOCIETY 1920  
of CHARLESTON

## **Acknowledgments**

*This project was completed by the Preservation Society of Charleston (PSC) in partnership with the Avery Research Center for African American History and Culture in 2025.*

*The final deliverables of the project were 1) a digital map in ArcGIS Survey123, 2) a paper map of the cemetery with each burial labeled with a number, 3) a corresponding spreadsheets of data (alphabetically and numerically organized), and 4) the following report with project analytics and photographs from the project.*

### **PRESERVATION SOCIETY OF CHARLESTON**

*Anna-Catherine Alexander, Director of Advocacy Initiatives  
Laurel M. Fay, Manager of Preservation & Research  
Flannery Antinoro, Preservation Specialist  
Madison Lee, Community Outreach Coordinator*

### **AVERY RESEARCH CENTER**

*Daron Calhoun II, Facilities, Outreach, and Public Programming Coordinator  
Veer Mehta, Archivist*

### **HUMANE & FRIENDLY SOCIETY CEMETERY DESCENDANTS & STEWARDS**

*Dr. Millicent Brown  
Julia Ellen Craft-Davis*

### **COLLEGE OF CHARLESTON**

*D'aujai Shamari Kelley  
Patricia Washington  
Renée Atkins*

### **VOLUNTEERS**

*R.W. Smith*

# HUMANE & FRIENDLY SOCIETY CEMETERY

## DIGITAL MAPPING PROJECT



*Photo by Laurel M. Fay, April 2025.*

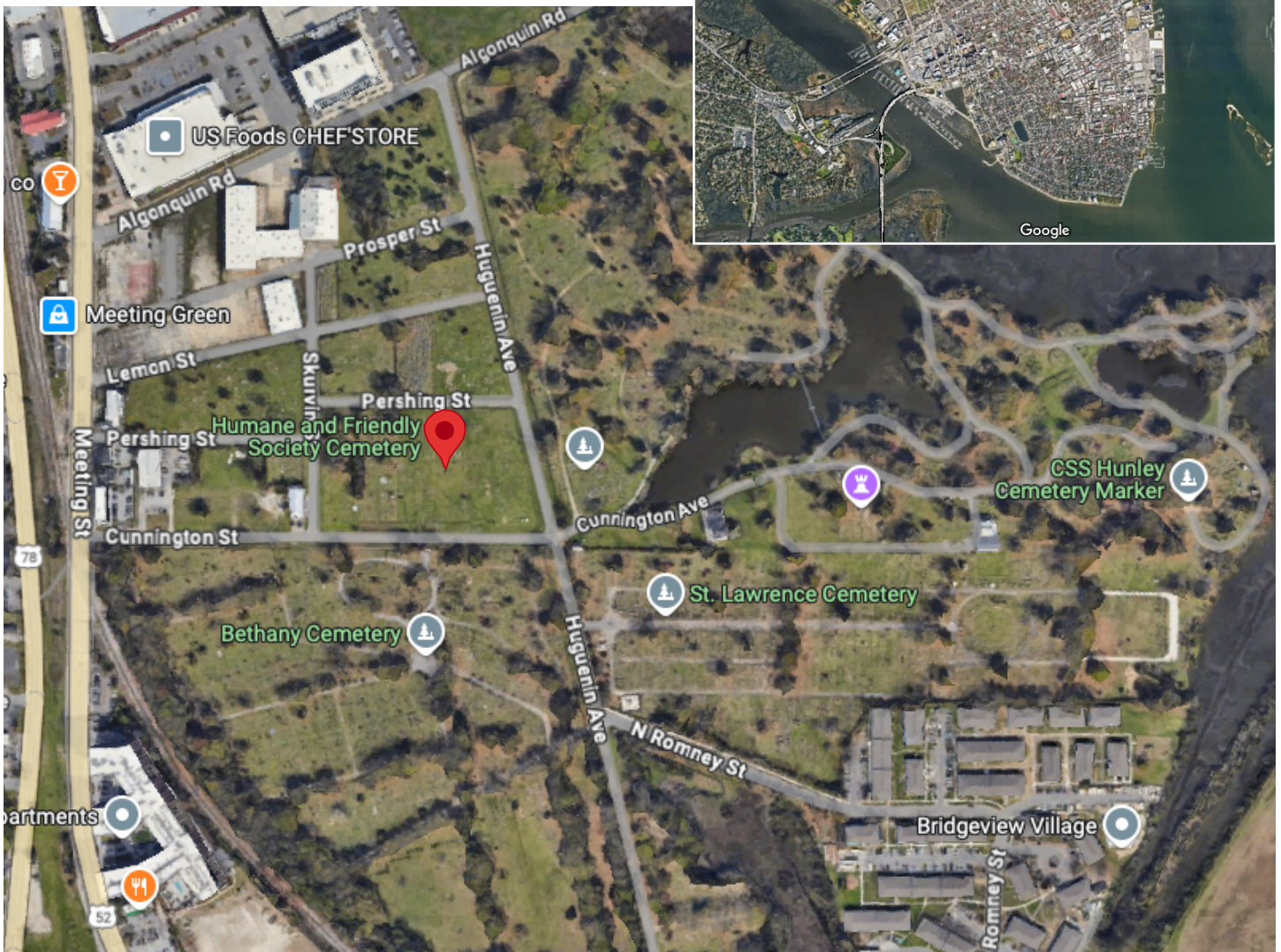
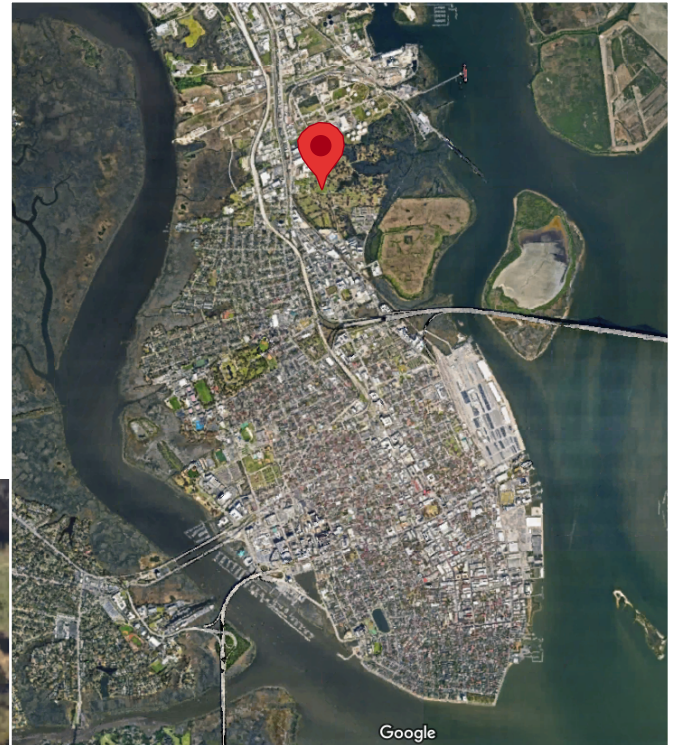
*This project captured information for **110 total extant burial markers**, representing **227 people interred** in Humane & Friendly Society Cemetery.*

- *5 Burial Markers Uncovered*
- *15 Military Veterans Located*
- *38 Family Coping Plots Identified*

# HUMANE & FRIENDLY SOCIETY CEMETERY

## DIGITAL MAPPING PROJECT

### LOCATION INSIDE CHARLESTON CEMETERY HISTORIC DISTRICT

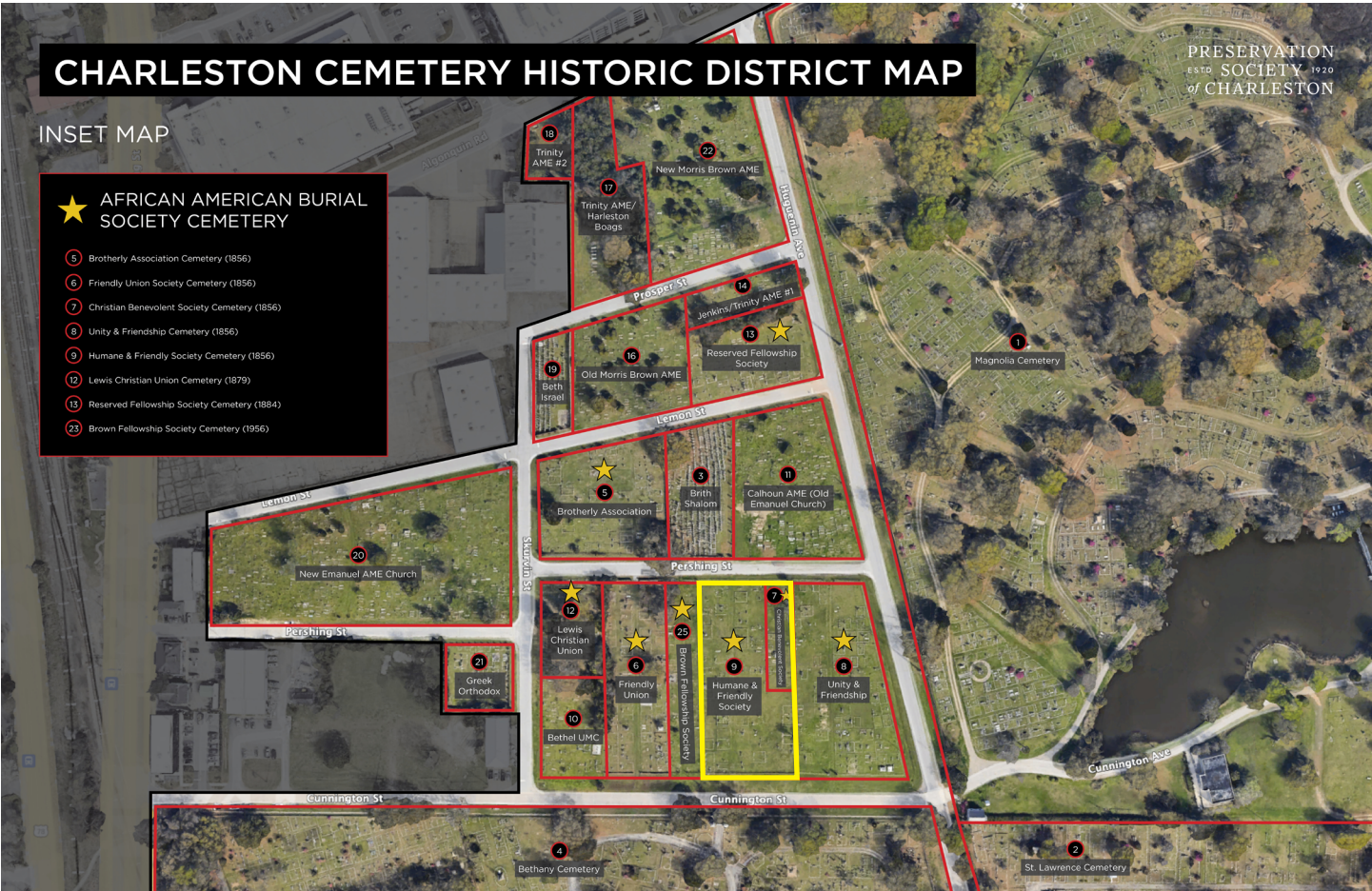


Google Maps, 2025.

# HUMANE & FRIENDLY SOCIETY CEMETERY

DIGITAL MAPPING PROJECT

## LOCATION INSIDE CHARLESTON CEMETERY HISTORIC DISTRICT

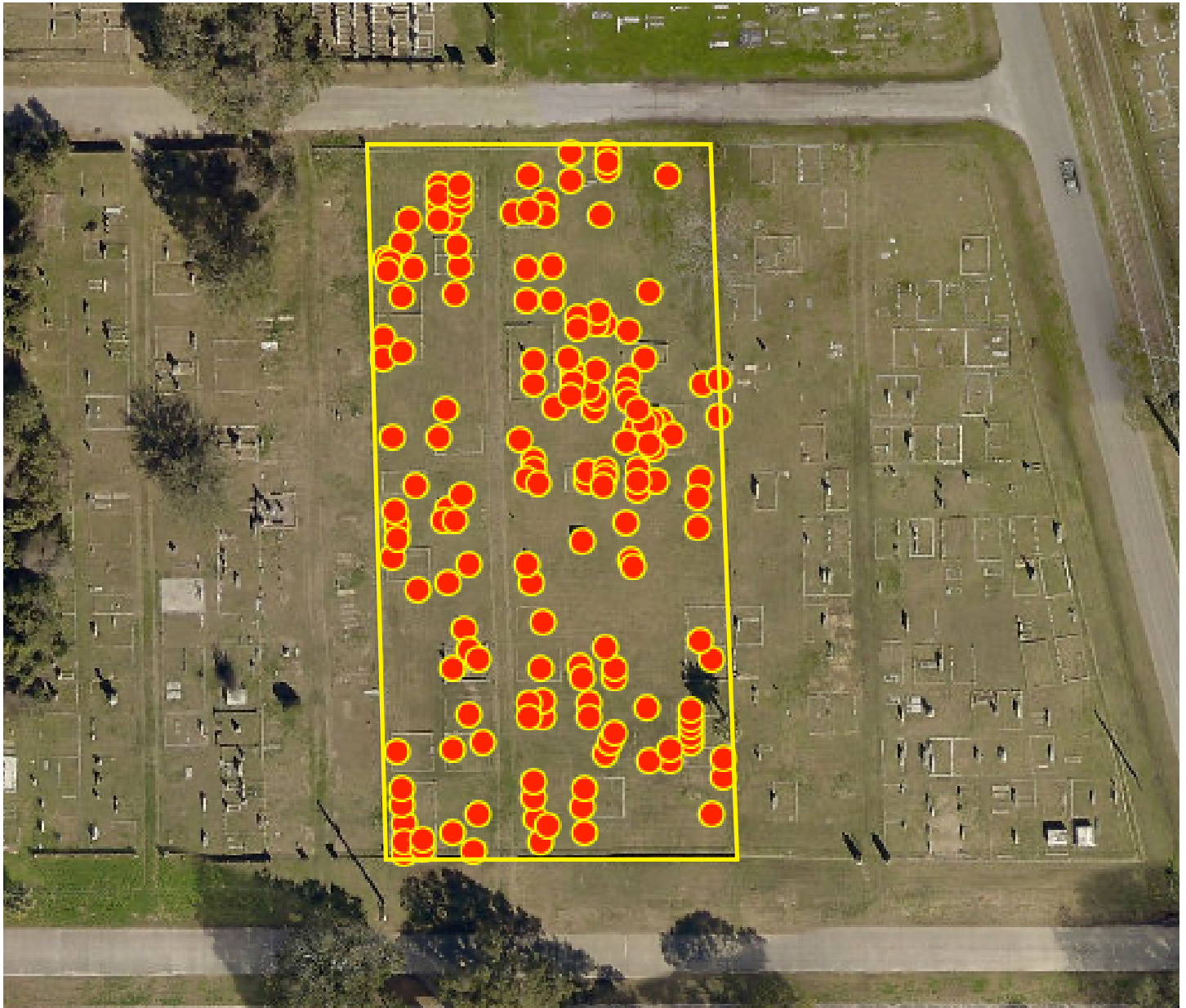


Graphic by Laurel M. Fay, 2024.

# HUMANE & FRIENDLY SOCIETY CEMETERY

## DIGITAL MAPPING PROJECT

### AERIAL VIEW OF CEMETERY WITH BURIAL POINTS

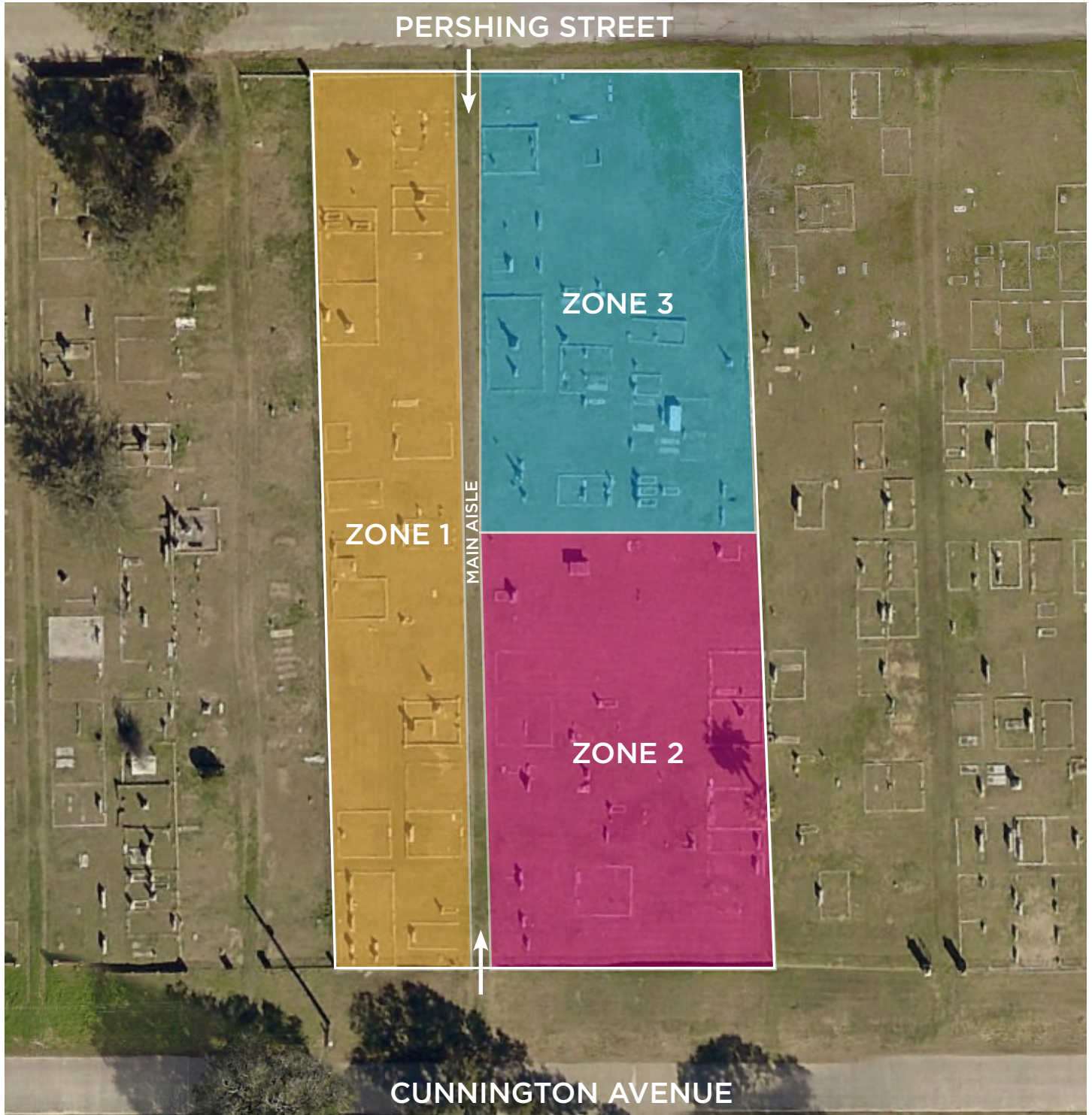


*Data compiled using ArcGIS Survey123.*

# HUMANE & FRIENDLY SOCIETY CEMETERY

## DIGITAL MAPPING PROJECT

### SITE MAP



Graphic by Laurel M. Fay.

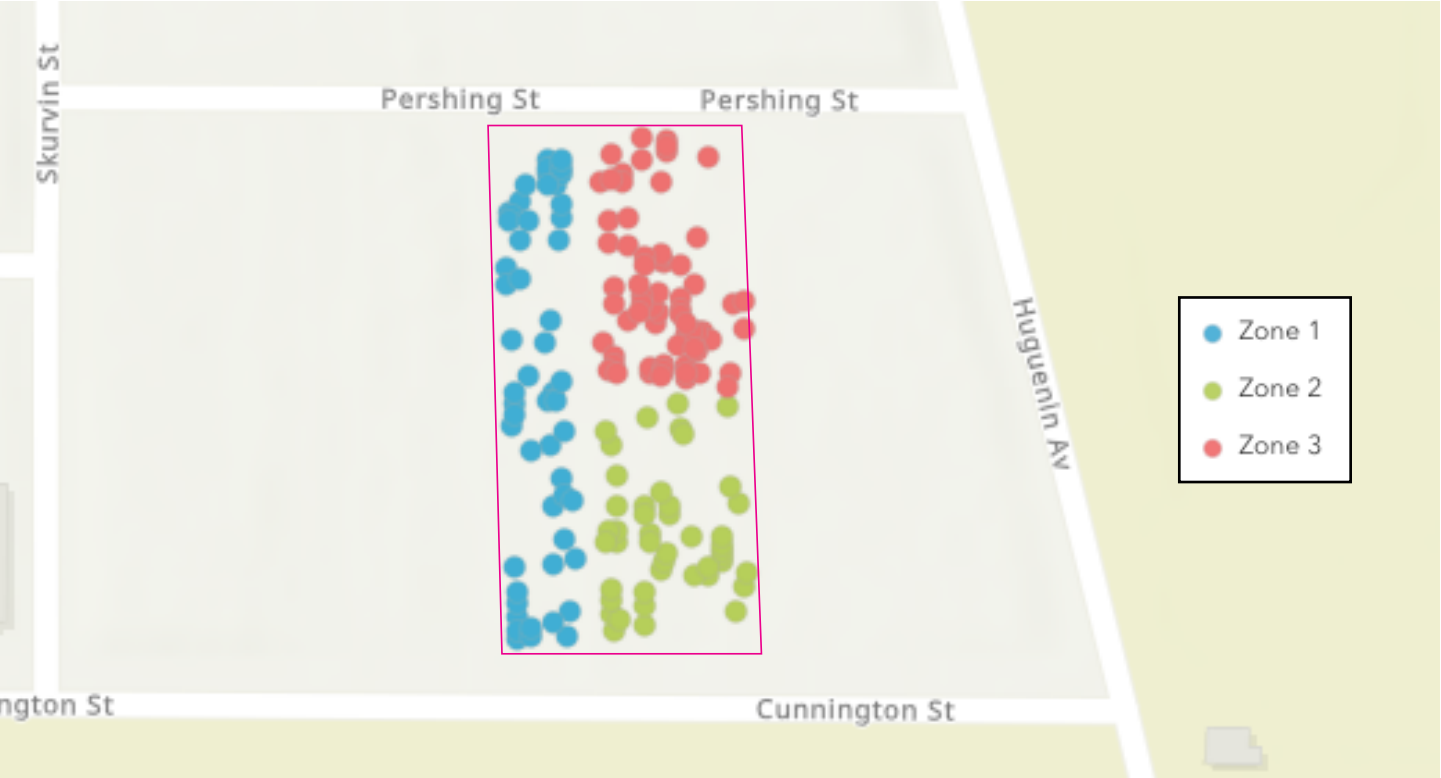
April-June 2025

Preservation Society of Charleston

# HUMANE & FRIENDLY SOCIETY CEMETERY

DIGITAL MAPPING PROJECT

## BURIALS BY ZONE



Answers	Count	Percentage
Zone 1	54	32.53%
Zone 2	45	27.11%
Zone 3	67	40.36%

Answered: 166 Skipped: 0

Data compiled using ArcGIS Survey123.

# HUMANE & FRIENDLY SOCIETY CEMETERY

## DIGITAL MAPPING PROJECT

### PHOTOGRAPHS OF MARKERS



# HUMANE & FRIENDLY SOCIETY CEMETERY

## DIGITAL MAPPING PROJECT

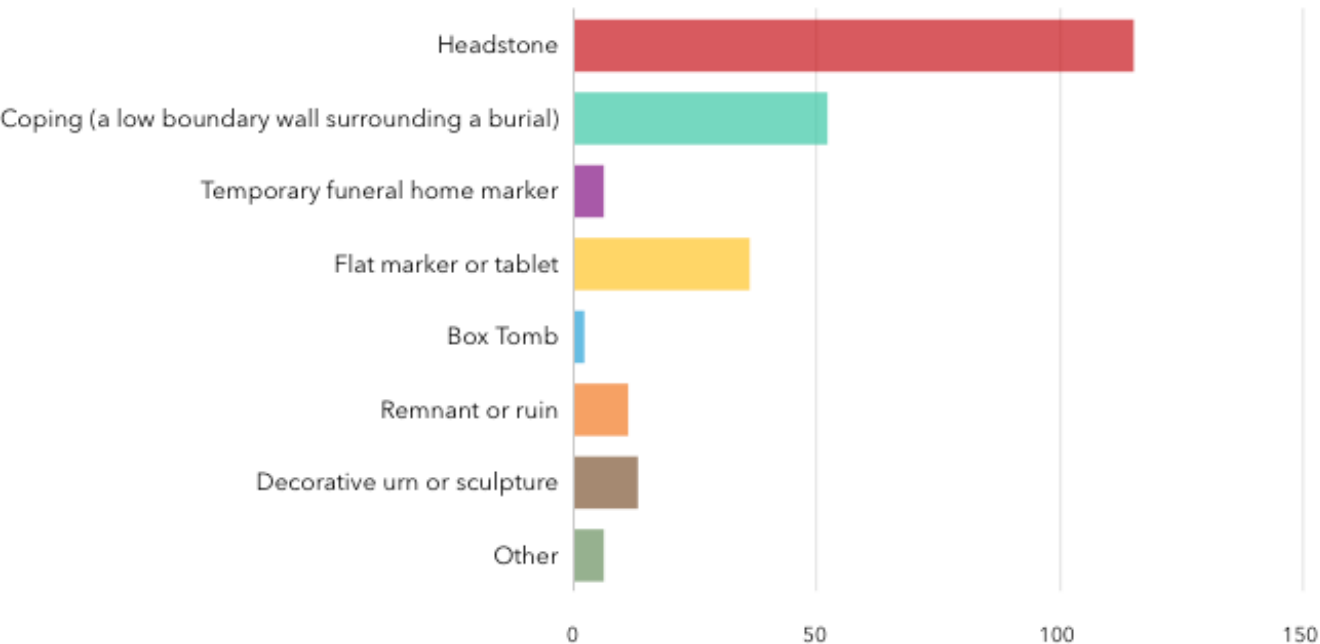
### PHOTOGRAPHS OF MARKERS (continued)



# HUMANE & FRIENDLY SOCIETY CEMETERY

## DIGITAL MAPPING PROJECT

### WHAT IS PRESENT ON THE LOT?



[Hide table](#) ☐ Other response ☒ Empty categories [Sort](#)

Answers	Count	Percentage
Headstone	115	69.28%
Coping (a low boundary wall surrounding a burial)	52	31.33%
Temporary funeral home marker	6	3.61%
Flat marker or tablet	36	21.69%
Box Tomb	2	1.2%
Remnant or ruin	11	6.63%
Decorative urn or sculpture	13	7.83%
Other	6	3.61%

Data compiled using ArcGIS Survey123.

## DIGITAL MAPPING PROJECT



Response	Percentage
Yes	~65%
No	~35%

☒ Empty categories ↑↓ Sort

Answered: 166 Skipped: 0



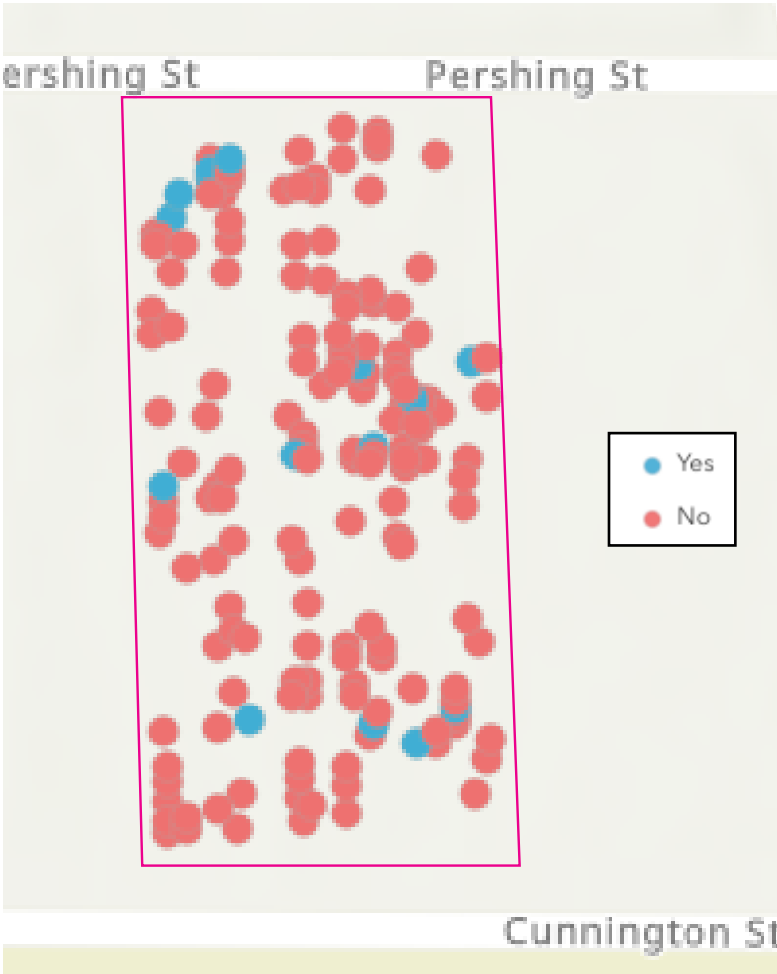
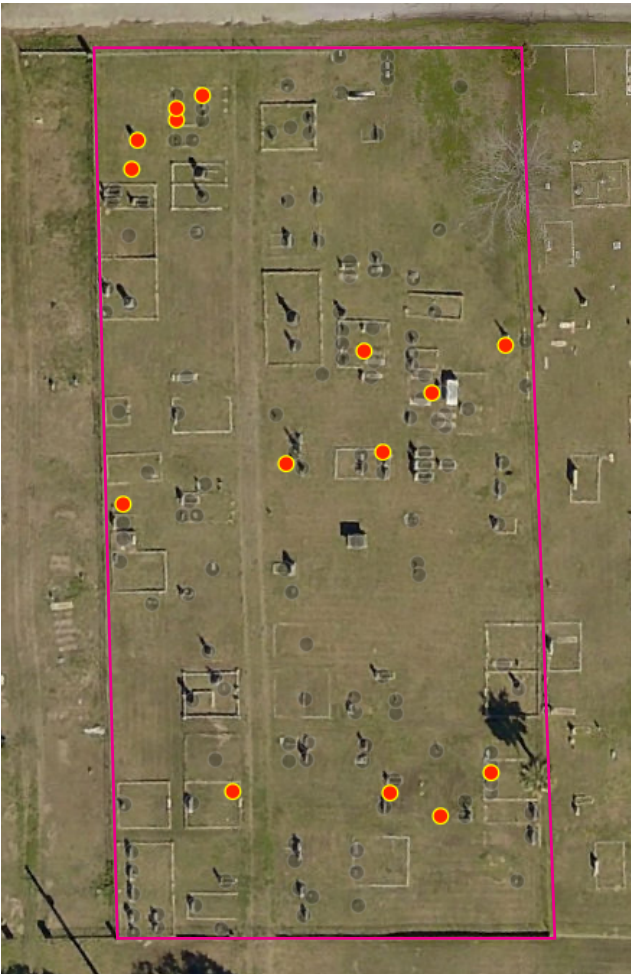
*April-June 2025*

*Preservation Society of Charleston*

# HUMANE & FRIENDLY SOCIETY CEMETERY

DIGITAL MAPPING PROJECT

## MILITARY MARKERS



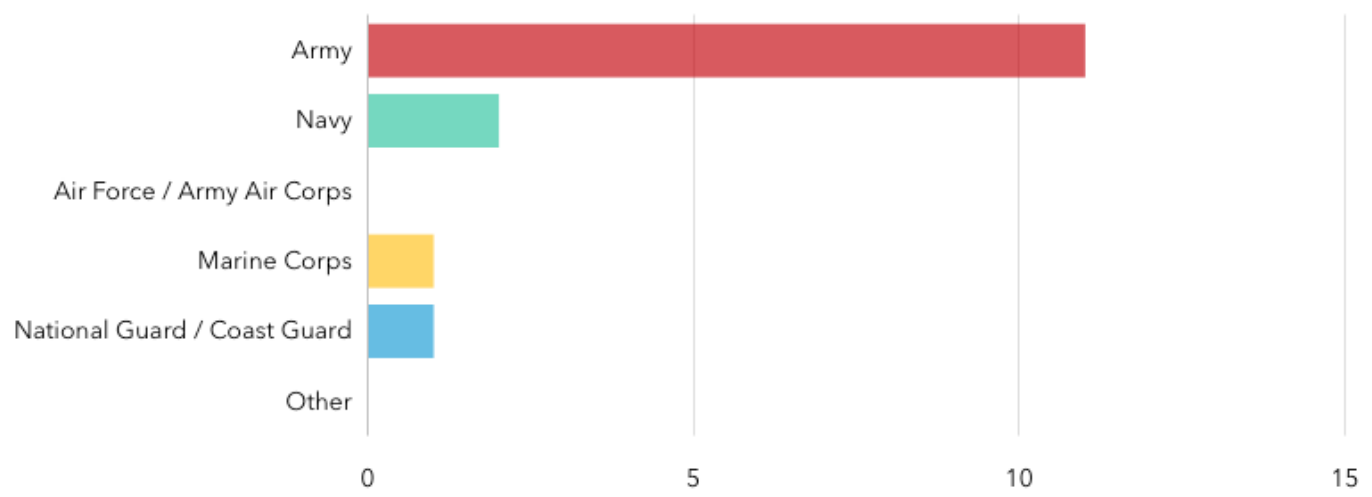
Answers	Count	Percentage
No	151	90.96%
Yes	15	9.04%

Data compiled using ArcGIS Survey123.

# HUMANE & FRIENDLY SOCIETY CEMETERY

DIGITAL MAPPING PROJECT

## MILITARY BRANCH



[Hide table](#)

Other response ☒ Empty categories Sort

Answers	Count	Percentage
Army	11	6.63%
Navy	2	1.2%
Air Force / Army Air Corps	0	0%
Marine Corps	1	0.6%
National Guard / Coast Guard	1	0.6%
Other	0	0%

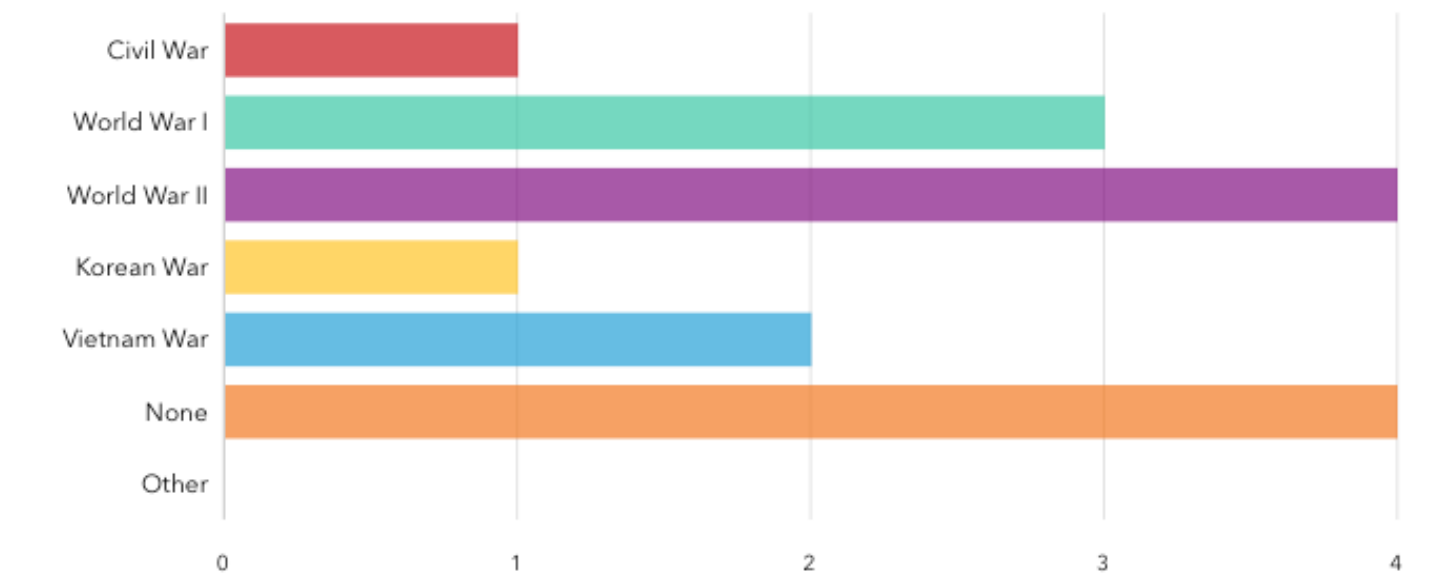
Answered: 15 Skipped: 151

Data compiled using ArcGIS Survey123.

# HUMANE & FRIENDLY SOCIETY CEMETERY

## DIGITAL MAPPING PROJECT

### MILITARY WAR OR BATTLE



[Hide table](#)

☐ Other response ☒ Empty categories [Sort](#)

Answers	Count	Percentage
Civil War	1	0.6%
World War I	3	1.81%
World War II	4	2.41%
Korean War	1	0.6%
Vietnam War	2	1.2%
None	4	2.41%
Other	0	0%

Answered: 14 Skipped: 152

Data compiled using ArcGIS Survey123.

# HUMANE & FRIENDLY SOCIETY CEMETERY

## DIGITAL MAPPING PROJECT

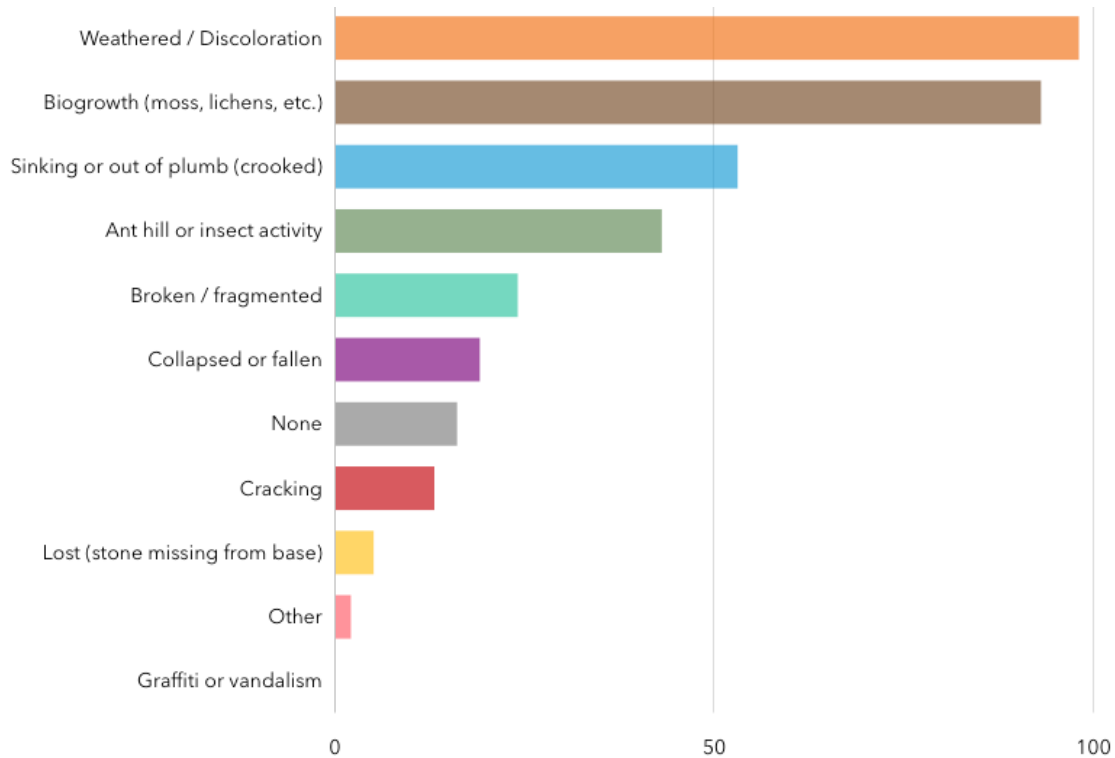
### LIST OF VETERANS IN CEMETERY

NAME	MARKER ID #	MILITARY BRANCH	WAR OR BATTLE (IF APPLICABLE)
William P. Ballard	29	Army	
Joseph Howard Bryan	94e	Army	World War II
Edward Campbell	55	National Guard/ Coast Guard	World War I
James Henry Conyers	106	Navy	
Samuel A. Dash	99d	Army	World War II
William H. Jefferson, Sr.	6b	Army	Korean War; Vietnam War
Stephen Edward Johnson	16	Army	
Julian C. Marshburn	75	Army	
Herman O'Brien	32b	Army	World War I
Rudolph F. O'Brien	32d	Army	World War I
Ward St. John O'Brien	32a	Navy	
Stephen Atkins Swails	30	Army	Civil War
Damon G. Thomas	70b	Army	World War II
Frank C. Wainwright	92e	Army	Vietnam War
Frank Henry White	59	Marine Corps	World War II

# HUMANE & FRIENDLY SOCIETY CEMETERY

## DIGITAL MAPPING PROJECT

### BURIAL MARKER CONDITIONS



Answers	Count	Percentage
Weathered / Discoloration	98	59.04%
Biogrowth (moss, lichens, etc.)	93	56.02%
Sinking or out of plumb (crooked)	53	31.93%
Ant hill or insect activity	43	25.9%
Broken / fragmented	24	14.46%
Collapsed or fallen	19	11.45%
None	16	9.64%
Cracking	13	7.83%
Lost (stone missing from base)	5	3.01%
Other	2	1.2%
Graffiti or vandalism	0	0%

Data compiled using ArcGIS Survey123.

April-June 2025

Preservation Society of Charleston

# HUMANE & FRIENDLY SOCIETY CEMETERY

## DIGITAL MAPPING PROJECT



*From left: Renée Atkins, Daron Calhoun, D'aujai Shamari Kelley, R.W. Smith, and Patricia Washington on mapping day one, on April 3, 2025.*



*From left: Veer Mehta, Anna-Catherine Alexander, Dr. Millicent Brown, Daron Calhoun, Laurel M. Fay, Madison Lee, Flannery Antinoro, and Julia-Ellen Craft Davis on mapping day two, on April 18, 2025.*

# HUMANE & FRIENDLY SOCIETY CEMETERY

## DIGITAL MAPPING PROJECT



*Students and volunteers digitally map burial markers.*



*D'aujai Shamari Kelley carefully uncovers a buried, fallen headstone.*



*April-June 2025*

*Preservation Society of Charleston*

# HUMANE & FRIENDLY SOCIETY CEMETERY

## DIGITAL MAPPING PROJECT



*R.W. Smith, Daron Calhoun, and Renée Atkins digitally mapping burial markers inside a family coping.*



*The Richard H. Gilmore burial marker has weathering and biogrowth, making it difficult to read.*



*Descendant Julia-Ellen Craft Davis clips overgrown grass to reveal a sunken headstone.*

*April-June 2025*

*Preservation Society of Charleston*

# HUMANE & FRIENDLY SOCIETY CEMETERY

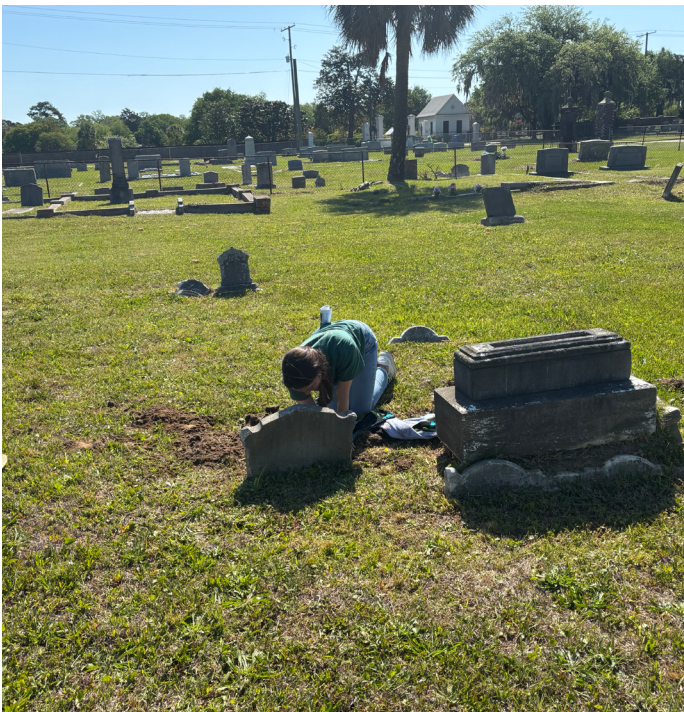
## DIGITAL MAPPING PROJECT



*Madison Lee documents burials in a family coping plot.*



*Veer Mehta brushes dirt off a headstone that was previously lying face down.*



*Flannery Antinoro digs around a headstone that has sunk into the ground to ascertain the name of the person interred.*



*Veer Mehta lifts a stone that had broken and fallen.*

*April-June 2025*

*Preservation Society of Charleston*